



INFORMATION BULLETIN 22-03

October 5, 2022

ALBERTA ONE OPERATING DIRECTIVES, REGULATIONS, POLICIES & PROCEDURES

Hockey Alberta, in conjunction with its tiered Minor Hockey Leagues and Minor Female Hockey Leagues, is proud to unveil the Alberta One Operating Directives, Regulations, Policies & Procedures.

The Alberta One Operating Directives, Regulations, Policies & Procedures is a major step in the Alberta One initiative, which has strived to develop consistent, standardized and aligned league operating standards across Alberta. The Alberta One Operating Directives, Regulations, Policies & Procedures set the standard under which Minor Hockey Leagues in Alberta will collectively operate to provide customer-focused League and competition models.

Hockey Alberta and the Minor Hockey Leagues have collectively begun work to ensure their operations are consistent and aligned with the Alberta One Operating Directives, Regulations, Policies & Procedures. Due to the significant changes that are occurring, the Minor Hockey Leagues will make any necessary adjustments to their operations over the course of the 2022-2023 hockey season to ensure they are compliant for the 2023-2024 hockey season.

Tiered Minor Hockey Leagues include: All Peace Hockey League (APHL), Northern Alberta Interlock, North East Alberta Hockey League, Central Alberta Hockey League, Edmonton Federation Hockey League (EFHL) and Hockey Calgary.

Minor Female Hockey Leagues include: APHL, East Central Alberta Female Hockey League, EFHL, Rocky Mountain Female Hockey League, and Hockey Calgary.

The Alberta One Operating Directives, Regulations & Policies will be maintained, updated, and housed via the Alberta One website. Please go to www.albertaonehockey.ca to view the most recent and updated version of the documents.

If you have any questions, please do not hesitate to contact our office.

Bryden Burrell,
Manager, Minor Hockey
bburrell@hockeyalberta.ca
403-342-6777

Morgen Kidney
Coordinator, Female Hockey
mkidney@hockeyalberta.ca
403-342-6777

ALBERTA ONE OPERATING DIRECTIVES



ALBERTA



Contents

ALBERTA ONE..... 2

 OBJECTIVES..... 2

LEGAL ACTION 2

AMENDMENTS 2

 ALBERTA ONE STRUCTURE 3

LEAGUE GOVERNANCE..... 3

 LEAGUE MEMBERSHIP 4

ALBERTA ONE MANAGEMENT STRUCTURE 7

 COMMITTEE APPOINTMENTS..... 8

 COMMITTEE RESPONSIBILITIES..... 9

APPENDICES..... 10

 APPENDIX A: ALBERTA ONE REGULATIONS, POLICIES & PROCEDURE AMENDMENT
 PROPOSAL PROCESS..... 10

 APPENDIX B: ALBERTA ONE MHA LEAGUE PARTICIPATION REVIEW PROCESS 11



Hockey Alberta identifies the Minor Leagues and Minor Female Committees as the operators of the tiered categories of minor hockey and minor female hockey at the U18, U15, U13 and U11 divisions.

Scheduled play will be implemented under the Alberta One Philosophy and the Leagues as assigned by Hockey Alberta in accordance with the Hockey Alberta Regulations.

- a. The Leagues are sanctioned leagues of Hockey Alberta.
- b. The Leagues are the governing body of the tiered categories of minor and minor female hockey for all teams at these categories.
- c. The Leagues will be comprised of four (4) age divisions of hockey being U18, U15, U13 and U11. These four age divisions will be further subdivided into tiers for the purposes of regional play, competition and reduced travel.
- d. Only the member teams of the Leagues shall be eligible for Provincial Championships for the U13, U15 and U18 divisions as provided in the Hockey Alberta Regulations, unless otherwise directed by Hockey Alberta.
- e. The Leagues will all play under the Rules and Regulations of Hockey Canada, Hockey Alberta and Alberta One Regulations, Policies & Procedures. Should a League, due to special or extenuating circumstances, look to deviate from one or more of the Alberta One Regulations, Policies or Procedures or look to operate a Pilot Program, rationale and support from the League Membership must be sent to the Minor Leagues Chair or Minor Female Chair for special exception. Each team will be responsible for complying with all rules and regulations of those "Governing Bodies" as well as the regulations of Alberta One.

OBJECTIVES

The objectives of Alberta One are to:

- a. Provide consistent League Operating Standards for Minor and Minor Female Regional Leagues approved by Hockey Alberta to structure sanctioned competition for the member MHAs in certain areas of the Province and for certain levels of hockey.
- b. Have an aligned customer-focused League structure and competition model that will be consistent in its delivery.
- c. Maintain a fair process where no Regional League or member MHA gain benefit or preference over or at the expense of another in any aspects of Regional League activities.
- d. Create a collection of teams to play each other where competitive balance, scheduling and options to reduce travel are a priority.
- e. Provide a consistent process amongst the Regional Leagues in determining representatives for Hockey Alberta Provincial Championships.

LEGAL ACTION

Any Association, team, team official, parent or player who threatens Hockey Alberta and/or its Leagues or its League Officers with any legal implications or actions, the team(s) involved may be suspended from participation in the Leagues until the legal action or implication has been properly dealt with.

AMENDMENTS

Please see Appendix A for the Alberta One Regulations, Policies & Procedures for Leagues Amendment Process



ALBERTA ONE STRUCTURE

Leagues, as hosts of tiered categories of play, are governed by Hockey Alberta and the Alberta One philosophy. Each League in the Province will be represented by a Management Group that is responsible for the tiered categories in their respective area. In general, it is expected that members of the Management Group will be the persons representing the League.

Tiered Minor Hockey Leagues:

- a. Shall be a properly organized League, that is sanctioned to operate scheduled play for the members registered with Hockey Alberta.
- b. Must have their President (or designate, upon Hockey Alberta approval) sit on Hockey Alberta's Minor Female and/ or Minor Leagues committees.
- c. New Leagues shall be accepted to Alberta One only after applying in writing, in accordance with the Hockey Alberta Regulations and being approved by Hockey Alberta. Any new League applicants must declare the Division(s) and Tiers of hockey they are applying to operate, and if accepted cannot enter another Division of Category without applying in writing to do such.
- d. Must be registered under the Alberta Societies Act and will be obligated to follow all requirements set forth by Alberta Societies Act.

Please see Appendix B for the Alberta One New League Application Guidelines

Leagues approved and operating under Alberta One are:

- All Peace Hockey League
- East Central Alberta Female Hockey League
- Northern Alberta Interlock
- Edmonton Federation Hockey League
- Hockey Calgary
- Rocky Mountain Female Hockey League
- Central Alberta Hockey League
- North Eastern Alberta Hockey League

LEAGUE GOVERNANCE

Leagues shall be responsible for the appointment for their Executive, as dictated by the Alberta Societies Act, but shall have at least one (1) individual responsible for the following functions of the Regional League:

- League Leadership (Example: President)
- Age Division Oversight (Example: U11 Director)
- League Discipline (Example: Discipline Coordinator)
- League Finances (Example: Treasurer)
- Officiating Liaison (Example: Referee in Chief)
- League Communications (Example: Website / Social Media Coordinator)
- League Administration (Example: Secretary / Administrator)



LEAGUE MEMBERSHIP

Membership of Leagues will be governed by the Minor Leagues and Minor Female committees and all members will be Minor Hockey Associations as hosts of minor tiered and female tiered teams in the U18, U15, U13 and/or U11 divisions of play.

General terms of League members include:

- a. A member of a League shall be a properly organized Minor Hockey Association wherein all its tiered hockey teams participating in the League shall be registered with Hockey Alberta, as required by Hockey Alberta. It will be the responsibility of each Minor Hockey Association to ensure that their teams are properly registered with Hockey Alberta.
- b. New members shall be admitted to a League only after applying in writing to the Minor Female and/ or Minor Leagues committees and being approved. Any such new member applicants must declare the Age Divisions of hockey they are applying to enter and, if accepted, cannot enter another Age Division without applying in writing to do such.

Please see Appendix C for the Alberta One League Membership Review Process.

- c. A member of a League shall appoint at least one (1) individual on a yearly basis to represent their Association at all League meetings and share and report all League information back to their Association and Teams that participate in the League.
- d. Association(s) and/or team(s) from outside Hockey Alberta may be permitted to participate in league play, if approved by Hockey Alberta on a yearly basis but will not be Members of the Leagues. They will not be eligible to represent the League at a Provincial Championship. The Association these teams belong to shall be known as a Associate Member in the Regional League.

League’s membership shall be as follows on a season-by-season basis:

ALL PEACE HOCKEY LEAGUE (APHL)			
<i>Beaverlodge</i>	<i>Clairmont</i>	<i>East Smoky</i>	<i>Fairview</i>
<i>Grande Cache</i>	<i>Grande Prairie</i>	<i>Grimshaw</i>	<i>Grovedale</i>
<i>High Level</i>	<i>High Prairie</i>	<i>Hines Creek</i>	<i>Horse Lake</i>
<i>Hythe</i>	<i>La Crete</i>	<i>La Glace</i>	<i>Loon River</i>
<i>Manning</i>	<i>Nampa</i>	<i>Peace River</i>	<i>Rainbow Lake</i>
<i>Rycroft</i>	<i>Savanna</i>	<i>Sexsmith</i>	<i>Smoky River</i>
<i>Spirit River</i>	<i>Valleyview</i>	<i>Wembley</i>	<i>*Slave Lake (Minor Female)</i>

ROCKY MOUNTAIN FEMALE HOCKEY LEAGUE (RMFHL)			
<i>3 C’s</i>	<i>Airdrie</i>	<i>Brooks</i>	<i>Canmore</i>
<i>Camrose</i>	<i>Cardston</i>	<i>Carstairs</i>	<i>Cochrane</i>
<i>Eckville</i>	<i>Lethbridge</i>	<i>Maskwacis</i>	<i>Medicine Hat</i>
<i>Okotoks</i>	<i>Olds</i>	<i>Picture Butte</i>	<i>Piikani Nation</i>
<i>Ponoka</i>	<i>Red Deer</i>	<i>Siksika Nation</i>	<i>Stettler</i>
<i>Strathmore</i>	<i>Whitecourt</i>	<i>Warburg</i>	

EDMONTON FEDERATION HOCKEY LEAGUE (EFHL)			
<i>Hockey Edmonton and Edmonton Girls Hockey Association</i>			
<i>Beaumont</i>	<i>Devon</i>	<i>Enoch</i>	<i>Fort Saskatchewan</i>
<i>Leduc</i>	<i>Sherwood Park</i>	<i>Spruce Grove</i>	<i>St. Albert</i>
<i>Stony Plain</i>	<i>Strathcona</i>	<i>Sturgeon Hockey Club</i>	<i>*Wetaskiwin (Minor Female)</i>



HOCKEY CALGARY

Hockey Calgary and Girls Hockey Calgary

NORTHERN ALBERTA INTERLOCK (NAI)

<i>Andrew</i>	<i>Athabasca</i>	<i>Barrhead</i>	<i>CNN</i>
<i>CR Knights</i>	<i>Drayton Valley</i>	<i>Edson</i>	<i>Elk Valley</i>
<i>Fort McMurray</i>	<i>Fox Creek</i>	<i>Hinton</i>	<i>Holden</i>
<i>Jasper</i>	<i>Mayerthorpe</i>	<i>New Sarepta</i>	<i>Onoway</i>
<i>Pembina</i>	<i>Redwater</i>	<i>Slave Lake</i>	<i>Smoky Lake</i>
<i>Swan Hills</i>	<i>Thorhild</i>	<i>Tofield</i>	<i>Viking</i>
<i>Wabasca</i>	<i>Westlock</i>	<i>Whitecourt</i>	<i>Winfield</i>

NORTH EASTERN ALBERTA HOCKEY LEAGUE (NEAHL)

<i>*3 C's</i>	<i>Bonnyville</i>	<i>Boyle</i>	<i>Chauvin</i>
<i>Cold Lake</i>	<i>Dewberry</i>	<i>Edgerton</i>	<i>Elk Point</i>
<i>Frog Lake</i>	<i>Glendon</i>	<i>Goodfish Lake</i>	<i>Hardisty</i>
<i>Hughenden</i>	<i>Irma</i>	<i>Kikino</i>	<i>Kitscoty</i>
<i>Lac La Biche</i>	<i>Lloydminster</i>	<i>Mallaig</i>	<i>Mannville</i>
<i>Marwayne</i>	<i>Onion Lake</i>	<i>Paradise Valley</i>	<i>Plamondon</i>
<i>Provost</i>	<i>Saddle Lake</i>	<i>St. Paul</i>	<i>Two Hills</i>
<i>Vegreville</i>	<i>Vermilion</i>	<i>Wainwright</i>	

CENTRAL ALBERTA HOCKEY LEAGUE (CAHL)

<i>*3 C's</i>	<i>Airdrie</i>	<i>Alix</i>	<i>Banff</i>
<i>Bashaw</i>	<i>Bassano</i>	<i>Battle River</i>	<i>Beiseker</i>
<i>Bentley</i>	<i>Big Valley</i>	<i>Blackfalds</i>	<i>Bow Island</i>
<i>Bowden</i>	<i>Brooks</i>	<i>Calmar</i>	<i>Camrose</i>
<i>Canmore</i>	<i>Cardston</i>	<i>Caroline</i>	<i>Carstairs</i>
<i>Chestermere</i>	<i>Claresholm</i>	<i>Clive</i>	<i>Coaldale</i>
<i>Cochrane</i>	<i>Cremona</i>	<i>Crossfield</i>	<i>Crowsnest Pass</i>
<i>Delburne</i>	<i>Didsbury</i>	<i>Drumheller</i>	<i>Duchess</i>
<i>Eckville</i>	<i>Endmoor</i>	<i>Foothills</i>	<i>Foremost</i>
<i>Fort MacLeod</i>	<i>Hanna</i>	<i>High Country</i>	<i>Hussar</i>
<i>Indus</i>	<i>Innisfail</i>	<i>Irvine</i>	<i>Kainai</i>
<i>Kneehill</i>	<i>Lacombe</i>	<i>Lethbridge</i>	<i>Lomond</i>
<i>Magrath</i>	<i>Maskwacis</i>	<i>Medicine Hat</i>	<i>Millet</i>
<i>Morrin</i>	<i>Nanton</i>	<i>Okotoks</i>	<i>Olds</i>
<i>Oyen</i>	<i>Picture Butte</i>	<i>Piikani Nation</i>	<i>Pincher Creek</i>
<i>Ponoka</i>	<i>Raymond</i>	<i>Red Deer</i>	<i>Redcliff</i>
<i>Rimbey</i>	<i>Rocky Mountain House</i>	<i>Rockyford</i>	<i>Siksika Nation</i>
<i>Spruce View</i>	<i>Standard</i>	<i>Stettler</i>	<i>Strathmore</i>
<i>Sundre</i>	<i>Sylvan Lake</i>	<i>Taber</i>	<i>Thorsby</i>
<i>Thunderstars</i>	<i>Vauxhall</i>	<i>Vulcan</i>	<i>Warburg</i>
<i>Warner</i>	<i>Wetaskiwin</i>		



EAST CENTRAL ALBERTA FEMALE HOCKEY LEAGUE (ECAFHL)

<i>Battle River</i>	<i>Cold Lake</i>	<i>Dewberry</i>	<i>Fort McMurray</i>
<i>Irma</i>	<i>Kitscoty</i>	<i>Lac La Biche</i>	<i>Lloydminster</i>
<i>Onion Lake</i>	<i>St. Paul</i>	<i>Vermilion</i>	<i>Wainwright</i>

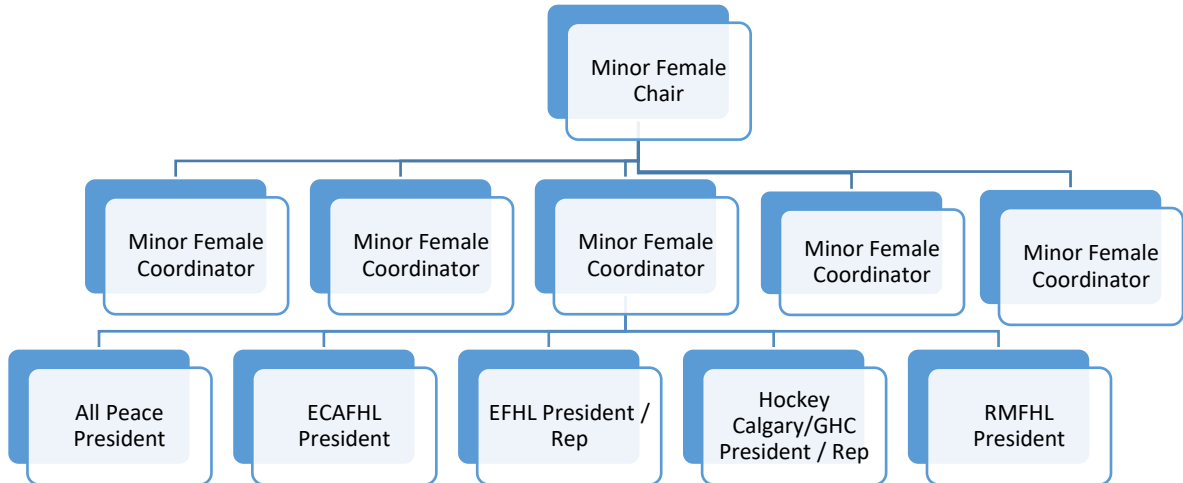
* Denotes an Association with teams in more than one (1) Regional League



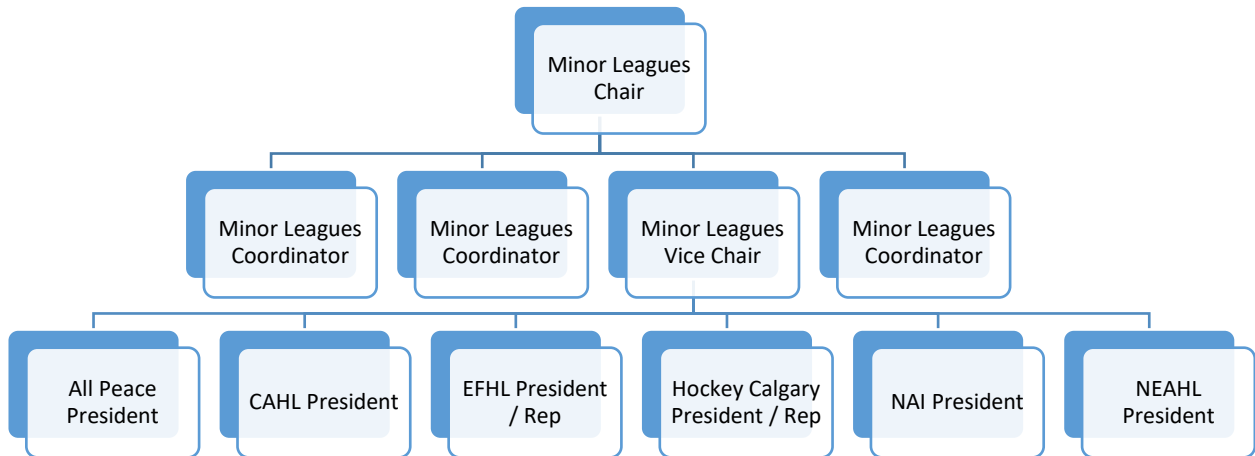
ALBERTA ONE MANAGEMENT STRUCTURE

Leagues operating under the Alberta One Philosophy will be governed by two oversight bodies – the Minor Leagues Committee and the Minor Female Committee.

MINOR FEMALE COMMITTEE STRUCTURE:



MINOR LEAGUES COMMITTEE STRUCTURE:





COMMITTEE APPOINTMENTS

Hockey Alberta shall appoint the Chair, Vice Chair and Coordinators for each Committee, while League Presidents / Representatives will be those individuals elected or appointed by their membership to sit on each Committee. As a board consideration, Committee member rotations will be made in orderly fashion such that there would be a complete turnover in the Committee in a single year.

Applications will be considered for the Minor Leagues and Minor Female committees based on the following guidelines:

- a. Chair
 1. Preference will be given to those who have previously held positions with the Minor Leagues or Minor Female Committee in role(s) other than the Chair;
 2. Is committed to working for the betterment of Leagues and Hockey Alberta;
 3. Has relevant experience running and/or participating on a volunteer board;
 4. Has knowledge and skills in one or more areas of Board governance such as policy, finance, strategic planning, or organizational development;
 5. Is willing to serve on and lead committees and sub-committees;
 6. Has relevant hockey experience including service within an MHA or being part of a program board of directors;
 7. Has experience coaching, managing or volunteering at various levels within Hockey Alberta, minor hockey associations and/or leagues;
 8. Will not be holding another hockey related position in any other League and is not running a business, the sole purpose of which is to earn a profit from the game of hockey.
- b. Vice Chair
 1. Preference will be given to those who have previously held positions with the Minor Leagues or Minor Female committees in role(s) other than the Chair;
 2. Committed to working for the betterment of Leagues and Hockey Alberta;
 3. Has relevant experience running and/or participating on a volunteer board;
 4. Has knowledge and skills in one or more areas of Board governance;
 5. Is willing to serve on and lead committees and sub-committees;
 6. Has relevant hockey experience including service with an MHA or being part of a program board of directors;
 7. Has experience coaching, managing, or volunteering at various levels within Hockey Alberta, minor hockey associations and/or leagues;
 8. Will not be holding another hockey related position in any other League and is not running a business, the sole purpose of which is to earn a profit from the game of hockey.
- c. Coordinators
 1. Is committed to working for the betterment of Leagues and Hockey Alberta;
 2. Has strong knowledge of Bylaws, Regulations, Policies and Procedures of Hockey Alberta;
 3. Is willing to serve on and lead committees and sub-committees;
 4. Has experience coaching, managing or volunteering at various levels within Hockey Alberta, minor hockey associations and/or leagues;
 5. Coordinators will reside in various geographic centres in the Province to ensure that all major hockey areas are represented on the Committee.
- d. League Presidents (or designates)
 1. Is committed to working for the betterment of Leagues and Hockey Alberta;
 2. Has relevant experience participating on a volunteer board;
 3. Willingness to serve on committees and sub-committees;
 4. Has Experience coaching, managing or volunteering at various levels within Hockey Alberta, minor hockey associations and/or leagues;
 5. Will not be holding another hockey related position in any other League and is not running a business, the sole purpose of which is to earn a profit from the game of hockey



Individuals who are appointed to the Minor Leagues or Minor Female committees, on behalf of Hockey Alberta, will serve in their positions on two (2) year terms, which are subject to annual review and may be renewed after each two (2) year term.

COMMITTEE RESPONSIBILITIES

Hockey Alberta has established the Minor Leagues and Minor Female committees to establish consistency in the operation of Leagues, using the Alberta One Philosophy. Leagues will operate tiered levels of minor and minor female hockey and conduct the day-to-day operations in accordance with the Bylaws, Regulations, Policies and Procedures as outlined in this document. Leagues are the only sanctioned bodies to operate tiered hockey in Alberta.

Committee members and their roles are as follows:

- a. Chair
 1. Preside over all Committee matters;
 2. Call all meetings, liaise with staff to prepare agendas and lead all meetings;
 3. Act as a liaison between the Committee and the office of the CEO, attending meetings as necessary;
 4. Liaise with Hockey Alberta staff to keep an accurate record of the proceedings of Alberta One;
 5. Sit on all Committee and workgroups as an Ex-Officio member;
 6. Appoint workgroups to deal with specific problems, to report on these problems and to state their recommendations. Once a workgroup has fulfilled its purpose, the workgroup shall be disbanded.
- b. Vice Chair
 1. Preside over Committee matters and meetings in absence of the Chair;
 2. Keep informed of the League activities and be prepared to assist and work with other members of the Committee at any time;
 3. Work with the League Referees in Chief to oversee and track complaints about Officiating, and act as a liaison between the Leagues and Officials Committee;
 4. Sit on any Committee workgroups as required;
- c. Coordinators
 1. Liaise with Hockey Alberta regarding the interpretation and application of Regulations;
 2. Coordinate regular communication with the Leagues;
 3. Coordinate regular communication with Associations to provide support to their female programs
 4. Attend League meetings to present/gather feedback as needed;
 5. Implement protocol for Overage Player Applications, Substitute Goaltender Requests and Player Movement.
 6. Sit on any Committee workgroups as required;
 7. Attend all Committee and Hockey Alberta meetings as required;
- d. League Presidents (or designates)
 1. Shall be the League President (or designate, as approved by Hockey Alberta, and have authority to represent the League on the Committee).
 2. Shall be involved operation of the League;
 3. Sit on any Committee workgroups as required;
 4. Attend all Committee and Hockey Alberta meetings as required;



ALBERTA
APPENDICES

APPENDIX A: ALBERTA ONE REGULATIONS, POLICIES & PROCEDURE AMENDMENT PROPOSAL PROCESS

This section provides detailed information that outlines how the member Regional Leagues of Alberta One and the participating Minor Hockey Associations of those Leagues can recommend and initiate amendments to the Alberta One Regulations, Policies & Procedures.

AB1 REGULATION, POLICIES & PROCEDURES AMENDMENTS PROCESS

1. To be considered for amendment in the following season (beginning August 1), all amendment proposals with rationale and support from the participants of the respective League, must be submitted to Hockey Alberta's Minor Leagues or Minor Female Committees in accordance with the following timeline:
 - a. Regulation, Policies & Procedures Amendments – **April 1**
2. For Amendment Proposals, the following items must be completed in full and submitted:
 - a. Alberta One Amendment Proposal Template
 - b. Letter of Support from the respective League, with proof of support from the League participants (Minor Hockey Associations).
3. Upon receipt of the application, Hockey Alberta's Minor Leagues and/or Minor Female Committees will review the submission, and if required, request additional information.
4. The final decision of Hockey Alberta's Minor Leagues and/or Minor Female Committees will come no later than **May 31st** and will be determined via the following procedure:
 - a. Each Member League represented on Hockey Alberta's Minor Leagues and/or Minor Female Committees will carry one (1) vote.
 - b. Each Minor League / Minor Female Coordinator represented on Hockey Alberta's Minor Leagues and/or Minor Female Committees will carry one (1) vote.
 - c. Should the vote remain tied, the Chairs, Minor Leagues and Minor Female will cast the final, tie-breaking votes.

All approved Amendments will be communicated by the Leagues to their member Minor Hockey Associations via a formal update prior to the start of the new season.



APPENDIX B: ALBERTA ONE MHA LEAGUE PARTICIPATION REVIEW PROCESS

OVERVIEW

This section provides detailed information that outlines how member Minor Hockey Associations can apply to Hockey Alberta to join a League or request a change and join a different League.

AB1 MHA LEAGUE PARTICIPATION REVIEW PROCESS

1. To be considered for participation in a League or to request to participate in another League for the upcoming season (beginning August 1), all applications with rationale must be submitted to Hockey Alberta in accordance with the following timelines:
 - a. **April 1** - Existing MHA
 - b. **June 1** - Newly Sanctioned / Amalgamated MHA

Note: Should the MHA in question be part of an application to start a new League, this application process is not required.

2. The following items must be completed in full and submitted to Hockey Alberta, depending on the type of application being made.
 - a. For Existing MHA Applications:
 - i. Formal Letter from Minor Hockey Association, complete with rationale as to why the association is looking to change leagues;
 - ii. Support from the Minor Hockey Association Membership (Example: Board Meeting Minutes);
 - iii. Proof of communication to the current and proposed Leagues informing them of the application;
 - iv. Approximate number of teams within each age division;
 - v. Travel impacts between the two leagues.
 - b. For Newly Sanctioned / Amalgamated MHA Applications:
 - i. Formal Letter from the Minor Hockey Association, complete with rationale as to why the associations is looking to become a member of the League.
 - ii. Support from the Minor Hockey Association (Example: Board Meeting Minutes)
 - iii. Approximate number of teams within each age division.
3. Upon receipt of the application, Hockey Alberta will review the submission and determine if any additional information is required.
4. The League, which the MHA is seeking to join, will be given the opportunity to provide their position on the application, seeking the feedback from their current League members.
 - a. If required, the League may identify a date for a presentation and discussion from the MHA in question with their League Members.
 - b. For Existing MHA League Change Applications, should the League, which the MHA is seeking to join, not provide their support of the application and not be willing to accept the MHA in question, the application process will be stopped and that MHA will no longer be considered for movement to that League.
5. For Existing MHA League Change Applications, the League in which the MHA is currently participating with and is looking to leave, will be given the opportunity to provide their position,



detailing the potential impact that the League could face should the MHA in question be granted permission to leave.

6. Upon receipt of each League's position, Hockey Alberta, if required, will identify a date for a presentation and discussion (via video teleconference) with the applying MHA.
7. After the presentation, if required, Hockey Alberta will evaluate the application and presentation. Hockey Alberta will also consult any key stakeholders to determine the possible impact to the overall hockey model and other MHA's.
8. The final decision of Hockey Alberta will be communicated to the applicant via email, by the following dates provided all documentation, positions, presentations and supporting follow ups are completed within a timely manner:
 - a. **May 31** - Existing MHA
 - b. **June 30** - Newly Sanctioned / Amalgamated MHA
9. The final decision of Hockey Alberta will be determined via the following procedure:
 - a. Each Regional League represented on Hockey Alberta's Minor Leagues Committee or Minor Female Committees will carry one (1) vote.
 - b. Each Minor League or Minor Female Coordinator represented on Hockey Alberta's Minor Leagues or Minor Female Committee will carry one (1) vote.
 - c. Should the vote remain tied, the Chair, Minor Leagues or Minor Female, will cast the final, tie-breaking vote.

ALBERTA ONE REGULATIONS, POLICIES & PROCEDURES





Contents

REGULATIONS, POLICIES AND PROCEDURES	3
LEAGUE TIERING	4
MINOR LEAGUES	4
MINOR FEMALE LEAGUES	4
CLASSIFICATION OF TEAMS	5
MINOR LEAGUES	5
NON-BODY CHECKING/ BODY CONTACT ONLY TIERS	5
MINOR FEMALE LEAGUES	6
TIERING & TEAM PLACEMENT	6
PLAYING RULES	7
LEAGUE MEETINGS	7
ROSTER SIZE	7
AFFILIATION	8
PROCEDURE	8
MINOR LEAGUES	8
ICE REQUIREMENTS	10
RURAL LEAGUE FLOOD REQUIREMENTS	10
GAMES/ SCHEDULING	10
MAXIMUM GAME ALLOTMENT TABLE	10
GAME CHANGES	11
TEAM FAILING TO PRESENT ITSELF	11
PRE-SEASON & TOURNAMENT/ EXHIBITION GAMES	11
ON-ICE OFFICIALS	12
GAME PLAY	12
WARMUPS	12
PREGAME EVENTS	12
PERIOD LENGTHS	13
OVERTIME	13
RESPONSIBILITIES OF THE HOME TEAM	13
JERSEY COLOURS	14
SCORESHEET SUBMISSION & STATISTICS	14
SUSPENSION POLICY	14



SUSPENSION PROCEDURES	15
SUPPLEMENTAL DISCIPLINE	15
MINOR FEMALE	15
GAME PROTESTS	16
APPEALS	16
STANDINGS	17
POINT FORMAT	17
TIEBREAKERS.....	17
PLAYOFFS.....	19
MINOR.....	19
MINOR FEMALE	19
FORMATS.....	19
SPLIT TIER STRUCTURE.....	19
OVERTIME.....	20
HOCKEY ALBERTA PROVINCIAL CHAMPIONSHIPS.....	20
APPENDICES.....	22
APPENDIX A: ALBERTA ONE STANDARIZED MINOR TIERING GRID	22
APPENDIX B: ALBERTA ONE WEATHER TRAVEL POLICY	24
APPENDIX C: TEAM FAILING TO PRESENT ITSELF PROCEDURE.....	26
APPENDIX D: APPROVED PLAYOFF FORMATS	27
APPENDIX E: APPROVED OVERTIME FORMATS.....	28



REGULATIONS, POLICIES AND PROCEDURES

This document refers to the Alberta One Regulations, Policies and Procedures put in place for Leagues and their member MHAs and may be changed from time to time at the discretion of the Minor Leagues and/ or Minor Female committees.

The policies and procedures referring to player movement, acceleration, registration and the structure of Alberta's Tiered Minor Hockey Leagues are set forth in the Hockey Alberta Regulations and this document is supplementary to it.

The policies enclosed in this document deal directly with the day-to-day operations of Alberta's Tiered Minor Hockey Leagues and how teams are to govern themselves and report occurrences to the Leagues and the committees.

Leagues and MHAs shall follow all Bylaws and Regulations of Hockey Canada and Hockey Alberta and the Alberta One Operating Directives, Regulations Policies & Procedures.

HOCKEY ALBERTA MINOR REGULATIONS CAN BE FOUND [HERE](#)

HOCKEY ALBERTA MINOR FEMALE REGULATIONS CAN BE FOUND [HERE](#)



LEAGUE TIERING

MINOR LEAGUES

- a. Each League shall not operate more than six (6) tiers at a division.
- b. Each League shall operate the following number of tiers per division based on the total number of teams in that division.

Teams per Division	Tiers per Division	* Tiers Operated
40 + Teams	6	Tiers 1, 2, 3, 4, 5 and 6
32-50 Teams	5	Tiers 1, 2, 3, 4 and 5
24-40 Teams	4	Tiers 1, 2, 4 and 5
16-30 Teams	3	Tier 2, 3 and 4
8-20 Teams	2	Tier 2 and 4
0-10 Teams	1	Tier 3 or 4

- c. Should a League look to operate different tiers than those listed above, approval from the Minor Leagues Committee must be given prior to the start of regular season play.
- d. Leagues, due to either team geography or the number of teams in a tier, will be permitted to operate split tiers if deemed necessary.
 - I. Split Tiers based on geography will be labelled as South, North, East or West. (Example: Tier 3 North or Tier 3 South).
 - II. Split Tiers based the number of teams will be labelled as Red, Blue, Black, etc... (Example: Tier 3 Red and Tier 3 Blue).
 - III. Split Tiers shall not be labelled as A, B, C D. (Example: Tier 3 A, Tier 3 B, Tier 3 Cm etc...)

MINOR FEMALE LEAGUES

- a. Each League shall not operate more than 2 tiers at a division (with the exception of additional house league tiers)
- b. Each League shall operate the following number of tiers per division based on the total number of teams in that division.

Teams per Division	Tiers per Division	* Tiers Operated
8 – 20 Teams	2	Tier 1 and 2
0 – 10 Teams	1	Tier 2

- c. Should a League look to operate different tiers than those listed above, approval from the Minor Female Committee must be given prior to the start of regular season play.
- d. Should a League, due to team geography, look to operate 'Split Tiers', approval from the Minor Female Committee must be given prior to the start of regular season play.
 - I. Split Tiers approved based on the request of geography will be labelled as South, North, East or West. (Example: Tier 2 North and Tier 2 South).



CLASSIFICATION OF TEAMS

MINOR LEAGUES

MHAs shall submit the approximate number of teams they will have in each division to their League by September 10 each year.

Leagues shall determine a date for MHAs to declare initial team placement by tier, using the Alberta One Standardized Tiering Grid. Teams shall be declared as per the Tiering Grid on a date as determined by the League. League members may request to have a team moved to a higher category than what is required by the Alberta One Standardized Tiering Grid. These requests, with rationale, must be submitted to the League on a date as determined by the League.

Please see Appendix A: Alberta One Standardized Minor Tiering Grid for the full grid.

- I. MHAs shall include all teams registered in their association at that division (excluding Elite, AA and Minor Female teams) when declaring teams as per the Alberta One Standardized Tiering Grid.
- II. When an MHA is required to, or requests to have more than one (1) team at a certain tier, those teams shall be equally blended and balanced.
- III. Upon application to the League, an MHA may be permitted to have two (2) or more equally blended and balanced teams at the same tier, instead of utilizing top-down tiering and having teams ranked strongest to weakest. These teams shall be placed on the Alberta One Standardized Tiering Grid at the median tier that any of these teams would have been placed at had they not chosen to be divided equally. Applications must be submitted to the League by September 10.

Example: An MHA chooses six (6) teams to be placed according to the Alberta One Standardized Tiering Grid. The MHA chooses to have three (3) ranked teams and three (3) equally blended and balanced teams. According to the Tiering Grid, the three (3) equally blended and divided teams should have been placed at Tier 4, 5 and 6 if they had been ranked. Consequently, those three (3) equally blended and balanced teams will be classified as Tier 5 teams, which is the median tier that any of these three (3) teams would have been placed at, had they been ranked.

- IV. Minor Female teams participating in a Minor Tiered League will not be declared per the Alberta One Standardized Tiering Grid but will have their initial team tiering placement and final tiering determined by the respective Minor Tiered League.
- V. Leagues will have the ability to move equally blended and divided teams to different tiers should it become apparent that they are either too strong or too weak for the tier that they have been placed in. This may include splitting the teams into different tiers.

NON-BODY CHECKING/ BODY CONTACT ONLY TIERS

- I. MHAs who only operate one (1) team within a division that has both body checking and non-body checking tiers, will be given the one-time declaration at the start of each season to declare that team as either 'body checking' or "non-body checking". This declaration must be made to the League on a date as determined by the League.
- II. League members with two (2) or more teams within a division that has both body checking and non-body checking tiers, must declare their teams as 'body checking' and "non-body checking" as per the Alberta One Standardized Tiering Grid.
- III. For the purposes of tiering, should a team declared for body checking wish to move to non-body checking after their tiering round games, they shall be able to do so prior to the completion of the Tiering Rounds.



MINOR FEMALE LEAGUES

MHAs shall submit the approximate number of teams they will have in each division to their League by September 10.

- I. All Leagues shall determine a date for MHAs to declare initial team placement by tier.
- II. MHAs shall include all teams registered in their association at that division (excluding AA & AAA Female teams) when declaring teams.
- III. When an MHA is required to, or requests to have more than one (1) team at a certain tier, those teams shall be equally blended and balanced.
- IV. Leagues will have the ability to move equally blended and divided teams to different tiers should it become apparent that they are either too strong or too weak for the tier that they have been placed in. This may include splitting the teams into different tiers.

TIERING & TEAM PLACEMENT

- a. Leagues shall schedule teams to take part in tiering games to determine the final tiering placement within the League.
- b. Leagues shall ensure that teams play a minimum of (4) tiering games before their final tiering placement is confirmed.
- c. Leagues shall have a process for confirming final team placement by analyzing pre-season and tiering game data. The purpose of this process is to create a balanced competition and to represent the best interests of all teams with the League in an impartial manner.
- d. Any challenges related to the final tiering placement of a team shall be heard by the League, under the following process:
 - I. Upon the communication of a team's tiering placement, an MHA will have 24 hours to file a challenge with the League. The challenge must be made by either the Association President or MHA Representative.
 - II. The League will review the challenge and the information presented and decide to accept or deny the challenge. Information that should be presented in the challenge includes:
 - The results of all tiering round games, along with the tiering placement of the teams tiering round games took place against.
 - Rationale to support the challenge, along with the tier the team should be placed in.
 - III. The League will have up to three (3) days to render a decision once the challenge is filed.
- e. All tiering placements must be finalized by January 1.
- f. Should it become apparent that there was an error in team placement that results in a team being too strong or weak for a certain tier, the League can move that team appropriately on or before January 15. Should that team who is too strong or weak for a certain tier refuse to be 're-tiered', the League, in consultation with the Minor Leagues Committee or Minor Female Committee, may disqualify them from further League play, including playoffs and Hockey Alberta's Provincial Championships.



PLAYING RULES

The Alberta One playing rules shall be those provided in the Hockey Canada Official Playing Rules Book.

LEAGUE MEETINGS

Leagues are empowered to call Information Meetings as required and are encouraged to communicate the dates of these meetings to the members no less than (14) days prior to the meeting date.

In addition to Information Meetings, Leagues shall host the following three (3) meetings:

- i. Pre-Season / Kick-Off Meeting.
- ii. Mid Season or Tiering Meeting
- iii. Annual General Meeting

All meetings will normally be held virtually via Video or Web Conferencing or 'in person' at a location central to the League.

MHA Representatives, as appointed by the MHA, should be board members and must be present at all League Meetings. If the MHA Representative is unable to attend, another board member from that MHA must attend in their place.

Leagues are permitted to fine MHAs in the amount of \$200 payable to the League should they fail to present themselves at any League Meeting.

ROSTER SIZE

Hockey Canada and Hockey Alberta Regulations allow tiered minor hockey teams to carry a roster of 19 players (17 skaters and two (2) goaltenders).

Hockey Alberta, through consultation with the League, may grant permission to register at one time, an oversized team, a maximum of twenty-three (23) players to their roster.

- i. Applications must be made via the Hockey Alberta Oversized Team Request Form.
- ii. All players must be properly registered in the Hockey Canada Registry (HCR) system prior to their first League Game (includes Tiering Games) or November 15th, whichever occurs first.



AFFILIATION

The purpose of affiliation is to provide an opportunity for higher Division or Category/Tier Teams to replace when regular registered players are sick, injured or otherwise unavailable.

A Hockey Team may affiliate up to nineteen (19) Players from a lower Division, Category or Tier within their MHA as hereby defined.

Minor Female Exception: When an MHA does not have a Minor Female team at the next lowest division or category, the MHA may place a request to the Minor Female Committee asking to be permitted to affiliate a player(s) from a lower Division or Category Minor Female team from a nearby MHA.

Please refer to the Hockey Alberta Minor Regulations and Minor Female Regulations for the complete Affiliation Regulations.

HOCKEY ALBERTA MINOR REGULATIONS CAN BE FOUND [HERE](#)

HOCKEY ALBERTA MINOR FEMALE REGULATIONS CAN BE FOUND [HERE](#)

PROCEDURE

- i. Affiliation must be declared and filed with the MHAs respective League, prior to the affiliated players being allowed to participate in any League game with the Hockey Team to which they are affiliated.
- ii. Leagues and the Hockey Alberta reserve the right to revoke the approval of an affiliate player at any time should that player be deemed to strengthen the team in which he or she is affiliated.
- iii. Providing Affiliation has been declared, filed and approved with the League and Hockey Alberta, Affiliates are eligible to participate in all Exhibition, Tournament, League, Playoff and Provincial Championship games.
- iv. Affiliated players will NOT be permitted to replace suspended Players.

Exception: In the event a team's roster falls below twelve (12) registered skaters (excluding goaltenders) due to suspensions, teams are permitted to use affiliation to return their roster size to a maximum of twelve (12) skaters (excluding goaltenders)

MINOR LEAGUES

- i. Affiliation and the use of Affiliate Players will only be recognized where Affiliation has been filed in accordance with the following tiering grid, as hereby defined vertically and laterally, using the team's designated tiering placement at the time of filing.



U18			
Tier 1	U15		
Tier 2	Tier 1	U13	U11
Tier 3		Tier 1	HADP
Tier 4	Tier 2		
Tier 5	Tier 3		
Tier 6	Tier 4	Tier 2	
	Tier 5	Tier 3	Tier 1
	Tier 6	Tier 4	Tier 2
		Tier 5	Tier 3
		Tier 6	Tier 4
			Tier 5

Example: Team A plays in the U18 Tier 3 category of their league. Team A would be eligible to affiliate players from within their MHA playing on teams competing at U18 Tier 4, 5 or 6; as well as teams playing U15 Tier 1, 2, 3, 4, 5 or 6.

Exception: If an MHA does not have access to Team(s) that align with the tiering grid), they may be able to apply to Hockey Alberta through the Minor Leagues Committee, or designate, for special permission to register affiliate(s) outside of the grid.

- ii. Upon the finalization of tiering, should a team be re-tiered after the filing of Affiliation and had affiliates that are no longer in compliance with the affiliation grid, those affiliates will be reviewed by the League to determine their individual eligibility for the remainder of the season.
- iii. Should the League deem individual affiliates as ineligible due to re-tiering, upon application to the Hockey Alberta appointed Minor League and Minor Administration Coordinator, Hockey Alberta may allow teams to re-submit individual affiliation requests to become compliant with the affiliation grid. Applications must be received no later than December 30 of the current hockey season.
- iv. Teams are permitted to use affiliation for any League, Playoff or Provincial Championship game to return the team to their original roster size.

Example: A team has 14 skaters and two (2) goaltenders registered to their Official Team Roster for a maximum of 16 players. Should two (2) skaters be unavailable due to sickness or injury, the team would be permitted to use two (2) affiliates to bring their roster size back up to the original 14 skaters and two (2) goaltenders.

Exception: In the event a team’s original roster size is less than twelve (12) registered skaters (excluding goaltenders), teams are permitted to use affiliation for any League, Playoff or Provincial Championship game to bring their roster up to a maximum of twelve (12) skaters (excluding goaltenders).

Exception: In the event a team has only one (1) registered goaltender, they will be permitted to use affiliation to have for any League, Playoff or Provincial Championship game to bring their roster up to a maximum of two (2) goaltenders.

- v. Teams are permitted to use affiliation for any Exhibition or Tournament game to bring their team up to the maximum permitted roster size of seventeen (17) skaters and two goaltenders.



- vi. Participants registered in the Elite Hockey Stream or AA Hockey Model are ineligible to be registered as Affiliates with Tiered Hockey teams.

ICE REQUIREMENTS

Each MHA must provide ice times and game slots that meet the minimum requirement as per the chart below:

Division	Rural Leagues Minimum Ice Time Length	Rural Leagues Flood Requirements	Metro Leagues Minimum Ice Time Length
U11	1.50 hours (90 minutes)	0 Floods Required	1.00 hour (60 minutes)
U13	2.00 hours (120 minutes)	1 Flood Required	Minor: 1.00 hour (60 minutes) Minor Female: 1.25 hours (75 minutes)
U15	2.00 hours (120 minutes)	1 Flood Required	1.25 hours (75 minutes)
U18	2.25 hours (135 minutes)	2 Floods Required	1.25 hours (75 minutes)

Note: Rural Leagues are defined as CAHL, NAI, NEAHL, APHL, ECAFHL, RMFHL
Metro Leagues are defined as Hockey Calgary & EFHL

RURAL LEAGUE FLOOD REQUIREMENTS

U18

There shall be a flood after every period at the U18 division.

U13 & U15

There shall be at least one (1) flood between either the first and second periods or the second and third periods at the U13 & U15 divisions.

U11

The ice shall be flooded before the start of a League game at the U11 division.

GAMES/ SCHEDULING

MAXIMUM GAME ALLOTMENT TABLE

The following table is to be used by MHAs to determine the number of unique ice slots that should be provided, per team, to the League for the purposes of scheduling tiering rounds and the regular season.

Division	Max Tiering Games	Max Total Games Played (Tiering & Regular Season)
U11	8 Games	16-24
U13	8 Games	16-24
U15	8 Games	16-24
U18	8 Games	16-24

- For Tiering Round games, Associations will provide a minimum of four (4) ice slots to the League, unless otherwise specified by the League.
- Leagues must communicate with all teams the proposed target number of games in the Regular Season by Division and Tier no later than October 8th of the current hockey season. Example: U13 Tier 2 Target (16-18 Games).
- For Regular Season play, Associations will provide an additional 50% of the required ice unless otherwise specified by the League that fewer ice slots are required. Example: 10 home games + five (5) additional slots = 15 (+50%) slots required for submission.



- d. Some divisions and tiers may play fewer games than indicated in the Maximum Game Allotment table. Leagues will confirm upon the commencement of Regular Season scheduling the exact number of games each tier within a division will play.
- e. When possible, at the discretion of the League, an equal number of home and away games will be scheduled, depending on the number of teams within a tier.

GAME CHANGES

League websites will host the official schedules. Game changes are only to be used in the event of extenuating circumstances, which may include, but are not limited to, facility malfunctions and adverse weather conditions that create unsafe road conditions.

Leagues will be responsible for developing their own policy on game changes.

Please see Appendix B for the Alberta One Weather Travel Policy.

TEAM FAILING TO PRESENT ITSELF

If a team fails to present itself at the time and place appointed to play a game, the game will be awarded to the opposing team with a score of 1-0 for statistical purposes unless the failure to show up was caused by an unavoidable accident or an unforeseen situation.

- a. At the discretion of the League, the team failing to present itself will be fined up to \$2,500.00, will have their Head Coach suspended for up to five (5) games and will be suspended from all game play (League, Exhibition, Tournament and Provincial) until the fine has been paid in full.
- b. Any team failing to present itself for a second time in one season will have its Head Coach suspended from all game play (League, Exhibition, Tournament and Provincial) indefinitely, until reviewed by Hockey Alberta's Minor Leagues and/or Minor Female Committee in greater detail.

Please see Appendix C for the Alberta One Team's Failing to Present Itself Policy.

PRE-SEASON & TOURNAMENT/ EXHIBITION GAMES

- a. Hockey Alberta is responsible for granting permission for any pre-season, exhibition and/or tournament games and for the administration of discipline that arises out of any pre-season, exhibition and/or tournament games.

Note: Hockey Calgary and Hockey Edmonton will respectively grant the permission for any pre-season, exhibition and/or tournament games for teams from their member associations.

- b. Leagues will correspond with Hockey Alberta's Minor Discipline Committee as appropriate regarding League and Carryover suspensions that may affect a participant's eligibility for any pre-season, exhibition and/or tournament game.



ON-ICE OFFICIALS

Hockey Canada and Hockey Alberta registered Officials must be used for all League games.

- a. When possible, a three (3) official or four (4) official system should be used for all U13, U15 and U18 League Games. When not possible, a two (2) official system must be used upon approval of the League Referee-in-Chief (RIC).
- b. A two (2) official system must be used for all U11 League Games. When possible, a three (3) official system may be used.
- c. Officials cannot officiate any League game should they have a member of their immediate family participating in the game as either a player, coach, manager, trainer or off-ice official.
Exception: Should there be a shortage of qualified officials, the League may approve the use of an Official with an immediate family member participating in the game. Both teams must agree to providing the exception prior to approval being given by the League.
- d. Each League Member is responsible for providing and assigning qualified officials for all League games.
- e. Hockey Canada Rule 5.2(k) must be followed if officials are not available to officiate any League game.
Rule 5.2(k): If for whatever reason, the Referee(s) or Linespersons(s) appointed are prevented from appearing, the Managers or Coaches of the two competing clubs shall agree on the Referee(s) and Linesperson(s). If they are unable to agree, they shall appoint a player from each team who shall act as officials.
- f. Officials will be required to fill out a Game Incident Report whenever any major, match or gross infraction take place during a League game. Game Incident Reports will not be required for 10-minute misconduct penalties, unless it leads directly to a game misconduct.
- g. Complaints regarding Officials must be made in writing and sent to the League Referee in Chief following the Hockey Alberta Complaints on Officials Process, which can be found [here](#).

HOCKEY ALBERTA'S OFFICIATING SYSTEMS POLICY CAN BE FOUND [HERE](#)

GAME PLAY

WARMUPS

- a. At the start of any League Regular Season or Playoff game, the maximum of five (5) minutes will be set on the clock, unless otherwise indicated in the below 'Period Lengths Chart'. At the start of the time slot, the clock shall start to commence warm-up. Following the warm-up, the clock shall be reset to 20 minutes (20:00) for the game to start.
- b. The warmup may be extended in length should it begin earlier than the scheduled time slot, provided that both Head Coaches agree.

PREGAME EVENTS

- a. Various pregame events may occur prior to the start of the game and are considered a routine event or a special event, as determined by the League.
 - I. Routine events include the playing of the national anthem or a flood between warmups and the start of the game;
 - II. Special events include a ceremonial puck drop, memorial event, banner raising, or any other similar event.
- b. Routine events shall be communicated by the home team head coach to the opposing team's head coach prior to the visiting team's arrival to the arena.
- c. Special events shall be communicated by the home team manager to the opposing team manager prior to game day.



PERIOD LENGTHS

All League gameplay shall follow the below 'Period Lengths Chart' for all tiering, regular season and playoff games.

All periods shall be played as stop-time.

Permit Length	No Floods	Warm-Up	One Flood	Warm-up	Two Floods	Warm-up
1 hour (60 minutes)	13-13-13	Three (3) minutes	-	-	-	-
1.25 hours (75 minutes)	15-15-15***	Five (5) minutes**	13-13-13	Three (3) minutes	-	-
1.50 hours (90 minutes)	20-20-20*	Five (5) minutes**	15-15-15	Five (5) minutes**	13-13-13	Three (3) minutes
1.75 hours (105 minutes)	20-20-20	Five (5) minutes	20-20-20*	Five (5) minutes	15-15-15	Five (5) minutes
2.00 hours (120 minutes)	20-20-20	Five (5) minutes	20-20-20	Five (5) minutes	20-20-20*	Five (5) minutes
2.25 hours+ (135+ minutes)	20-20-20	Five (5) minutes	20-20-20	Five (5) minutes	20-20-20	Five (5) minutes

* Leagues may opt for 15-20-20

**Leagues may opt for three (3) minute warmups

***Minor Female Exception: 16-16-16

Should an unusual delay occur for any unforeseen circumstances and there is no flexibility to extend the time, the drop clock rule will be in effect. If there is five (5:00) minutes left on the ice permit, after the first stoppage of play, the game clock shall be reset to two (2:00) minutes stop time.

Flooding shall only be allowed between periods at the U11 division should an adequate amount of ice time be allocated. A minimum of 1 ¼ ice allocation must be provided to allow one (1) flood between either the first and second periods or the second and third periods.

OVERTIME

Due to factors around ice availability and time slots, each League will be given the ability to determine if Overtime will be played in the Regular Season. Should a League choose to operate Overtime during the Regular Season, it shall be operated under the approved Alberta One Regular Season Overtime Format.

Please see Appendix E for approved Alberta One Overtime Formats.

RESPONSIBILITIES OF THE HOME TEAM

- The home team for League games is responsible to coordinate off-ice officials, unless otherwise determined by the League.
- The home team must provide a scorekeeper, a timekeeper and two (2) penalty box workers for all games.
- The home team must provide the necessary game sheets and incident reports for the game.
- The home team is to call in, e-mail and forward all game write-ups, score sheets and associated discipline information to the League immediately following each game.
- The home team must input the game score and information from the game sheet into the League website within 24 hours of completion of the game.
- The home team must provide pucks for both teams for warm-up (at least one per player) unless otherwise determined by the League.



JERSEY COLOURS

The home team will be required to wear dark colored jerseys, while the visiting team will be required to wear light colored jerseys. In the event of a conflict or a third jersey, the team requesting the change must bring it forward to the opposing team and corresponding League for approval.

SCORESHEET SUBMISSION & STATISTICS

Each home team has the responsibility to ensure that game sheets are filled out correctly and submitted/uploaded to the League's website.

- a. Game sheets must be legible and filled out properly for any League game. This includes providing the dates, team names, officials' names (Referee & Linesmen), division, tier and game number.
- b. Game sheets and write up reports (if applicable) must be uploaded to the Leagues website within 24 hours following the completion of a game.
- c. All suspendable infractions must be reported to the League immediately following the game completion. Game sheet and write up reports must be submitted at time of reporting these infractions.
- d. Teams will be provided a maximum of one (1) warning should they fail to upload a game sheet within the allotted time frame. Upon a second infraction, the offending team will be fined in the amount of (\$200) and will be deemed ineligible from all game play (League, Exhibition, Tournament and Provincial) until the fine has been paid in full.
- e. Teams will be provided a maximum of one (1) warning should they fail to provide a legible game sheet as determined by the League. Upon a second infraction, the offending team will be fined in the amount of (\$200) and will be deemed ineligible from all game play (League, Exhibition, Tournament and Provincial) until the fine has been paid in full.

SUSPENSION POLICY

In the event of any five (5) minute majors, misconducts, game misconducts or any other suspendable infraction being assessed during a League game involving a League team, a legible version of the scoresheet and write up reports must be submitted to the League immediately following the game completion.

- a. Each League has the power to issue suspensions in accordance with the Hockey Alberta Minimum Suspensions.
- b. All indefinite suspensions will be ruled on by Hockey Alberta's Minor Discipline Chair, in consultation with Hockey Alberta's Minor Discipline Coordinator(s) and the League.
- c. All suspensions will be issued through formal documentation and submitted to Hockey Alberta's Minor Discipline Committee

Leagues will follow the Hockey Alberta Minimum Suspensions for all suspensions. Suspensions rendered with the minimum suspension enforced will not be appealable. Accumulative suspensions will be enforced for all divisions of play for any League, Exhibition, Tournament and/or Provincial Championship Play. Accumulative suspensions will be tracked by the League Discipline Coordinator(s) and Hockey Alberta's Regional Service Area Discipline Coordinator(s).

Affiliated players or additional rostered players on an approved oversized team will NOT be permitted to replace suspended Players.

Exception: In the event a team's roster falls below twelve (12) registered skaters (excluding goaltenders) due to suspensions, that team will be permitted the ability to use affiliation to return their roster size to a maximum of twelve (12) skaters plus goaltenders.

HOCKEY ALBERTA'S MINIMUM SUSPENSIONS CAN BE FOUND [HERE](#)



SUSPENSION PROCEDURES

- a. For all discipline, the League will rule within 48 hours of being notified of an infraction.
- b. All suspended players/personnel must be recorded on the game sheet as being suspended.
- c. The home team must email the League all referee write-ups immediately following the completion of the game.
- d. All automatic suspensions, as per the Hockey Alberta Minimum Suspensions, shall apply to all League Games, Playoffs and Provincial Championships.
- e. All suspensions will be carried forward for any League Playoff games and Provincial Championship games.
- f. Hockey Alberta’s Minimum Suspensions are not appealable.

Leagues expect Coaches and Team Management to be responsible for the discipline of their team and actions of their fans. It is the responsibility of the Coaches and Team Management to understand Hockey Alberta’s Minimum Suspensions.

Indefinite Suspensions

- a. Immediately following the completion of a game, League teams are required to submit a legible version of the game sheet and write up reports to the League.
- b. Leagues will issue an official ‘Notification of Suspension’ to the offending individual and team, indicating ‘Indefinite’.
- c. The League, after ensuring completion, will submit the investigation package (game sheet, all write ups, offender statement and recommendation of discipline) to the respective Regional Service Area Discipline Coordinator.
- d. After reviewing the file to ensure completion, the Minor Discipline Coordinator will submit the file to the Hockey Alberta Office for review by the Minor Discipline Chair.
- e. Review of the incident will take place by the Minor Discipline Chair and a final decision on the length of suspension will be rendered to the player, MHA, League and Regional Service Area by the Hockey Alberta Office on behalf of the Minor Discipline Chair.

SUPPLEMENTAL DISCIPLINE

Leagues will have a policy on supplemental discipline related to the accumulation of penalty minutes over the course of a hockey season. Each League will determine the appropriate thresholds based on division, number of games and length of games; however, suspensions under supplemental discipline for penalty minute accumulation will be as follows:

Threshold	Suspension Length
1	One (1) Game
2	Two (2) Games
3	Four (4) Games
4	Eight (8) Games

MINOR FEMALE

- a. Players who reach Threshold 1 due to the accumulation of penalty minutes by the end of the League Regular Season, will have their penalty minutes carried over into the League Playoffs for continued tracking and accumulation.
- b. Players who receive a suspension due to the accumulation of penalty minutes that carries over into the Hockey Alberta Provincial Championships, will be required to serve the suspension at the start of the event. However, the tracking and accumulation of penalty minutes will not be tracked at the Provincial Championships.
- c. Players who do not reach Threshold 1 by the end of the League Regular Season, will not have their penalty minutes carried over into the League Playoffs and tracking and accumulation will be stopped.



- d. Leagues shall be responsible for the ongoing monitoring of penalty minute accumulations and will be responsible for warning any teams and players who are approaching or trending towards a given threshold.

GAME PROTESTS

- a. Only the two teams involved shall have the right to file a protest over a game or incident connected therewith.
- b. Referees are in care and control of the game. As such protest will not be accepted when a referee has exercised their judgement in officiating the game or their interpretation of the rules.
- c. Upon receipt of the protest, the League will appoint a neutral, unbiased committee to hear the protest.
- d. Protests and all supporting evidence must be submitted to the League by the MHA President within 48 hours of the game protested. All documentation must be accompanied by a cheque or money order, payable to the League, in the amount of \$300.
- e. All protests require that the League contact the member association submitting the protest and the Manager of the team being protested against.
- f. If the committee (whose decision shall be final) dismisses the protest, the sum deposited with the protest will be forfeited to the League.
- g. Protest decisions are final.

APPEALS

League rulings or decisions, except for protest decisions, may be appealed using the following procedures:

- a. Upon receipt of the appeal, the League will appoint a neutral, unbiased committee to hear the appeal.
- b. Appeals and all supporting evidence must be submitted to the League by the MHA President within seven (7) days from the League ruling. The appeal must be accompanied by a cheque or money order, payable to the League, in the amount of \$300.
- c. An appeals hearing shall be held within seven (7) days of receiving the appeal and will follow Hockey Alberta rules for such hearings.
- d. A decision on the appeal shall be rendered within seven (7) days from the date of the appeal hearing.
- e. League decisions upheld through appeal may be appealed to Hockey Alberta.

Note: Appeals will not be heard for any referee decision resulting in a suspension in accordance Hockey Alberta's Minimum Suspension Guidelines.



POINT FORMAT

Points for wins and losses for the League will be awarded on the following basis:

- Two (2) points for Regulation win or Overtime win.
- One (1) point for Regulation tie, Overtime loss or Overtime tie.
- Zero (0) points for a Regulation loss.

TIEBREAKERS

The following procedure shall take place to determine Final Regular Season Standings in the event teams are tied following the Regular Season Schedule:

If two (2) teams are tied:

- The team with the most wins in the Regular Season in games played between the two (2) tied teams.
- If still tied, the team with the most wins during the Regular Season.
Note: Should the two (2) tied teams play an unequal number of Regular Season games, this rule will not apply. Please proceed to step c.
- If still tied, the team with the highest points percentage. Points percentage will be determined using the following formula: **Points / Total Possible Points to be earned X 100 = Points %**

Example: Points Earned (PE) = 18 Total Possible Points (TPP) = 28

$\frac{PE}{TPP} = \frac{18}{28} = 0.643\% \times 100 = 64.3\%$
--

Note: To calculate total possible points, take the number of games played at the end of the regular season and multiply by two (2). Example: 14 games played x two = 28 total possible points.

- If still tied, the team with the highest goal ratio. Goal ratio will be determined using the following formula: **Goals For / (Goals For + Goals Against) X 100 = Goal Ratio %**

Example: Goals For = 56 Goals Against = 44

$\frac{GF}{GF + GA} = \frac{56}{100} = 0.560\% \times 100 = 56.0\%$

- If still tied, the team with the fewest penalty minutes per game average. Penalty Minutes per game average will be determined using the following formula: **Total Regular Season Penalty Minutes / Number of Regular Season Games played = Penalty Minute average per game.**

Example: Regular Season Penalty Minutes = 115

Regular Season Games = 18

$\frac{PIMS}{Games} = \frac{115}{18} = 6.39 \text{ Average}$
--

- If still tied, a coin toss shall take place by the League.

If three (3) or more teams are tied:

- The team with the most wins during the Regular Season.
Note: Should the three (3) or more tied teams play an unequal number of Regular Season games, this rule will not apply. Please proceed to step b.



- b. If still tied, the team with the highest points percentage. Points percentage will be determined using the following formula: **Points / Total Possible Points to be earned X 100 = Points %**

Example: Points Earned (PE) = 18 Total Possible Points (TPP) = 28

$\frac{PE}{TPP} = \frac{18}{28} = 0.643\% = 64.3\%$

Note: To calculate total possible points, take the number of games played at the end of the regular season and multiply by two (2). Example: 14 games played x two = 28 total possible points.

If all three (3) or more percentages are different for the teams that are tied, then the highest percentage will gain the highest ranking and so forth with the lowest ranking percentage gaining the lowest position amongst the tied teams.

- c. If two or more teams are still tied, the team with the highest goal ratio. Goal ratio will be determined using the following formula: **Goals For / (Goals For + Goals Against) X 100 = Goal Ratio %**

Example: Goals For = 56 Goals Against = 44

$\frac{GF}{GF + GA} = \frac{56}{100} = 0.560\% = 56.0\%$
--

If all goal ratio percentages are different for the teams that are tied, then the highest percentage will gain the highest ranking and so forth with the lowest ranking percentage gaining the lowest position amongst the tied teams.

- d. If two or more teams are still tied, the team with the fewest penalty minutes per game average. Penalty Minutes per game average will be determined using the following formula: **Total Regular Season Penalty Minutes / Number of Regular Season Games played = Penalty Minute average per game.**

Example: Regular Season Penalty Minutes = 115 Regular Season Games = 18

$\frac{PIMS}{Games} = \frac{115}{18} = 6.39 \text{ Average}$
--

If all penalty minute per game averages is different for the teams that are tied, then the team with the lowest penalty minute per game average will gain the highest ranking and so forth with the team with the highest penalty minute per game average gaining the lowest position amongst the tied teams.

- e. If still tied, a coin toss shall take place by the League.



PLAYOFFS

Leagues will be permitted to operate Playoffs under one (1) of two (2) approved parent formats - Round Robin or Knockout. Playoff formats are chosen at the discretion of league, depending on the number of teams within a specific division and tier, provided they are an approved Alberta One Playoff Structure.

- a. All League Teams shall participate in playoffs and will not be eliminated after the conclusion of the Regular Season.
- b. Leagues will be required to schedule all teams to participate in League Playoffs until the first week of March.
- c. All League Playoffs shall have no teams eliminated after one game or series.
- d. Leagues must complete their League Playoffs, and have their League Champion declared no later than two (2) Sundays prior to the Hockey Alberta Provincial Championship, for any divisions and tiers eligible to compete.

Please see Appendix D for the approved Alberta One Playoff Structures.

MINOR

- a) Any League Member, whose team(s) fail to fulfil its commitment to participate in the League Playoffs, shall be ineligible in the subsequent season, unless a reinstatement fee of \$1,000 is paid to the League on or before October 15th of the calendar year. All Team Officials of the Team failing to fulfill its commitment to League Playoffs shall be suspended, beginning May 1st of that calendar year, for a minimum of one (1) year. At the discretion of the Minor Leagues Committee Chair (where exceptional circumstances beyond control of the Team Officials and/or the MHA precluded in the Provincials) the MHA's reinstatement fee and/or suspensions of Team Officials may be waived.

MINOR FEMALE

- a) Should extenuating circumstances dictate, requests can be made to the Minor Female Chair, in conjunction with the League, to opt out of League Playoffs. Requests must be made with permission from their MHA President.
 - i. Requests must be made prior to February 1st of the season.
 - ii. Decisions will be rendered by February 15th of the season.
- b) Leagues will supply the Championship Banners for each Division Tier Playoff Champion.

FORMATS

- a) Playoffs can be hosted over a specific period of time, with individual games played at the home arena of the home team. Playoffs can, but do not need to, be hosted on a single weekend at a single venue
- b) Leagues can submit a new playoff format for use in the current playing season for approval by the Minor Leagues Committee. All submissions must be received by no later than December 1 of the current playing season.
- c) Leagues must communicate their playoff format for the current season (Round Robin or Knockout) to their teams prior to the start of the regular season. Leagues are permitted to adjust within the Knockout and Round Robin categories at any point leading up to the start of playoffs (ex. Knockout style communicated - league decides to operate series as opposed to single games).
- d) Leagues are permitted to conduct a series between the final two (2) teams to determine their League Champion.

SPLIT TIER STRUCTURE

Should a tier, due to geography or the number of teams, be split at the start of the Regular Season into multiple team groupings, each tier group shall follow one of the approved Alberta One Playoff Structures, to determine the Tier Grouping Champion.



Example: Tier 2 Red and Tier 2 Blue each have seven (7) teams. Both tier groupings shall follow one of the approved Alberta One Playoff Structures to determine the Tier 2 Red and Tier 2 Blue Tier Grouping Champion.

Once the Tier Grouping Champions have been determined, Leagues will be able to utilize one of the approved Alberta One Playoff Structures to determine the League Champion.

OVERTIME

Based on the approved playoff structure utilized, Overtime may be played for any playoff game tied after Regulation. Due to factors around ice availability and time slots, Rural Leagues and Metro Leagues will operate under slightly different Overtime Rules.

Please see Appendix E for approved Alberta One Overtime Formats.

HOCKEY ALBERTA PROVINCIAL CHAMPIONSHIPS

Following the conclusion of the League Playoffs, Hockey Alberta will host Provincial Championship events to determine the Provincial Champion for specific divisions and tiers.

- a. The following divisions and tiers will have Provincial Championship events:

MINOR		
U13	U15	U18
Tier 1	Tier 1	Tier 1
Tier 2	Tier 2	Tier 2
Tier 3	Tier 3	Tier 3
Tier 4	Tier 4	Tier 4

MINOR FEMALE		
U13	U15	U18
Tier 1	Tier 1	Tier 1
Tier 2	Tier 2	Tier 2

- b. Teams declared League Playoff Champions are obligated to attend the Hockey Alberta Provincial Championship, representing their League at the event.

Exception: Upon application to the Minor Leagues Committee, Metro Leagues may request to have their regular season champion attend the Hockey Alberta Provincial Championships in place of their League Playoff Champion. Applications must be made no later than December 15th of the current hockey season.

- c. Teams declared League Champions at their respective division and tier are obligated to attend the Hockey Alberta Provincial Championship, representing their League at the event.
- d. All Provincial Championship events will be eight (8) team tournaments:
 - a. **MINOR:** Six (6) League Champions, one (1) host team and one (1) wildcard team.
 - b. **MINOR FEMALE:** Five (5) League Champions, one (1) host team and two (2) wildcard teams.
- e. Hockey Alberta will appoint the host team for each Provincial Championship event no later than December 15th of the current hockey season.
- f. Should a team appointed as a host for a Provincial Championship event also be declared their League Champion, the team finishing second in the League playoffs will also attend the Provincial Championship event.
- g. Hockey Alberta, via random draw, will determine the League(s) awarded the wildcard spots for a Provincial Championship event no later than January 15th. The League(s) selected for the wildcard spot(s) will send both the League Champion and the team finishing second in the



League Playoffs. Leagues who have a team hosting the Provincial Championship event will not be eligible for the wildcard spot for that division and tier.



APPENDICES

APPENDIX A: ALBERTA ONE STANDARDIZED MINOR TIERING GRID

	U11							
	HADP	Tier 1	Tier 2	U11	Tier 3	Tier 4	Tier 5	
	U13, U15 & U18							
	Tier 1	Tier 2	Tier 3	U11	Tier 4	Tier 5	Tier 6	Total
	Body Checking (U15 & U18)			U11	Non-Body Checking / Body Contact Only			
One team				1 (Option)				1
Two Teams		1			1			2
Three Teams	*1			1 (Option)		1		3
Four Teams	1		1		1	1		4
Five Teams	1		1		1	1	1	5
Six Teams	1	1	1		1	1	1	6
Seven Teams	1	1	1		1	1	1	7
				1 (Option)				
Eight Teams	1	1	1		1	1	1	8
		1			1			
Nine Teams	1	1	1		1	1	1	9
	**1			1 (Option)		1		
Ten Teams	1	1	2		2	2	1	10
	**1							
Eleven Teams	1	1	2		2	2	2	11
	***1							
Twelve Teams	2	2	2		2	2	2	12
Thirteen Teams	2	2	2		2	2	2	13
				1 (Option)				
Fourteen Teams	2	2	2		2	2	2	14
		1			1			
Fifteen Teams	2	2	2		2	2	2	15
	1			1 (Option)		1		
Sixteen Teams	2	2	3		3	3	2	16
	1							



	U11							Total
	HADP	Tier 1	Tier 2	Tier 3	Tier 4	Tier 5		
	U13, U15 & U18							
	Tier 1	Tier 2	Tier 3	Tier 4	Tier 5	Tier 6		
	Body Checking (U15 & U18)			Non-Body Checking / Body Contact Only				
Seventeen Teams	2	2	3		3	3	3	17
	1							
Eighteen Teams	3	3	3		3	3	3	18
Nineteen Teams	3	3	3		3	3	3	19
			1 (Option)					
Twenty Teams	3	3	3		3	3	3	20
		1			1			
Twenty-One Teams	3	3	3		3	3	3	21
	1		1 (Option)		1			
Twenty-Two Teams	3	3	4		4	4	3	22
	1							
Twenty-Three Teams	3	3	4		4	4	4	23
	1							
Twenty-Four Teams	4	4	4		4	4	4	24
Twenty-Five Teams	4	4	4		4	4	4	25
			1 (Option)					



APPENDIX B: ALBERTA ONE WEATHER TRAVEL POLICY

The Alberta One Weather Travel Policy assists Leagues and their teams in managing the risks of poor travel conditions or circumstances in a fair and equitable manner. This policy will allow for real time decisions based on the circumstances of the travelling teams regardless of location, time, distances and weather conditions.

This policy does not apply in situations involving travel within the same city or municipality (Example: City of Calgary city limits or City of Edmonton city limits).

GENERAL PHILOSOPHY

Regardless of geography across Alberta, the weather can impact travel to games to the point where risk management of the travel is the most important decision about the game(s) that day.

When a hockey game can be postponed and rescheduled, no one will argue that playing the game is more important than participant safety when travel is required.

Team level decisions should be made without direct pressure, intimidation or other forms of undue pressure being presented and it must not be used as an excuse or advantage to the travelling participants to opt out of the game.

At no time, should actions be taken by League representatives or other participants to bully, coerce, threaten or otherwise engage in making a team feel like they must travel. The decision must be made by the team(s) travelling and the host of the game.

The people undertaking the travelling must be the final decision makers on if the route and trip can be travelled safely or at a risk level that they wish to accept.

POLICY

Hockey Alberta and its Leagues will never force a team to travel to a game in adverse/ severe weather situations. Games will not be cancelled but will be considered for short notice postponement only due to adverse/ severe weather conditions or other unforeseen circumstances.

Definitions for adverse/ severe weather conditions include but are not limited to heavy snowfall or freezing rain that causes dangerous driving conditions.

DECISION MAKING FACTORS

The following considerations and circumstances should be considered by the travelling team prior to making the decision not to travel to a game:

- Weather statements, watches and warnings issued by Environment Canada less than 24 hours prior to the start of the game.
Note: Weather statements, watches and warnings received more than 48 hours prior to the start of the game can result in premature decision making.
- Localized travel restrictions or recommendations to not travel unless necessary.
Note: Travel restrictions or recommendations should be considered for all areas travelled, as bordering local police agencies may have different restrictions or recommendations in place due to local travel advisories.
- Real time reports or reports from other participants in the area in question or from the host team participants.
- The time of day, age of participants, distance of travel and current changes to the weather.
- The route or travel is near or through areas where adverse / severe weather could arrive during or after the destination has been reached.

POSTPONEMENT PROCEDURES

Should the travelling team decide it is unsafe to travel due to adverse/ severe weather conditions, the following procedure must be followed:



1. Within 12 hours prior to the start of the game, the travelling team should contact the opposing team's Manager and League to inform them of the potential adverse/ severe weather conditions and planned departure time.

Note: Should the game start prior to 11 AM, the travelling team should contact the opposing Team's Manager and League the evening before to inform them of the potential adverse/ severe weather conditions and planned departure time.

2. Within two (2) hours prior to departure time, the travelling team must contact the opposing team's Manager and League, to declare their intent to postpone the game due to adverse/ severe weather conditions.
3. With both teams in agreement to postpone, the League will provide written approval to both Managers. MHA Presidents and local Official Assignor on the postponement and the reasons.
4. With the game postponed, the two (2) teams will split the cost of ice.
5. If the on-ice officials are contacted prior to them travelling to the arena, the cost of officials will be waived. However, should the officials be travelling to or at the arena, the cost of officials will be paid by the home team.
6. Within 48 hours of postponement, the game must be rescheduled and communicated to the League.

FAILURE TO COMPLY/ ABUSE OF POLICY

Should teams or participants not follow the procedures or process in this policy, the League will conduct a thorough investigation into the situation.

Should the investigation determine that the procedures and process were not followed, the League holds the right to fine the offending team a maximum of \$2500 and suspend the Head Coach for five (5) games. The offending team will be suspended from all game play (League, Exhibition, Tournament and Exhibition) until the fine is paid.



APPENDIX C: TEAM FAILING TO PRESENT ITSELF PROCEDURE

If a team fails to present itself at the host arena upon the signing of the game sheet, the following procedure shall be followed, based on scenario. It is the responsibility of all League teams and member associations to maintain open communication amongst each other to ensure that these types of situations do not arise.

PROCEDURE

1. Contact, via phone, the Manager or Coach of the team that is not present to determine if the team is on route to the arena.
 - a. If contact is made, and the team is on route, but delayed due to unforeseen circumstances (poor weather, traffic, accident, etc...) all attempts to play the game should be made upon arrival of the team. This could include the removal of floods between periods or playing shorter periods.
 - b. If contact cannot be made, following the conclusion of the pre-game warmup, the game shall be cancelled and forfeited should no players become present.
2. In either circumstance, the League shall be made aware and updated on the outcome.
3. Should a team become present for the game, but in reduced numbers, the following shall apply based on the numbers present:
 - a. If at least six players (as per the Hockey Canada Rulebook) are present, the game will start immediately following the pre-game warmup. Should more players be on route, they must be noted on the game sheet to ensure they are eligible to participate upon their arrival.
 - b. If less than six players are present on ice following the pre-game warmup, but more players are arriving or getting dressed, the game will commence when six players are available. Full details, should there be a delay, must be reported to the League for possible disciplinary action.
 - c. If less than six players are present on ice following the pre-game warm up and no other players have arrived at the arena, the game shall be forfeited with full details reported to the League for further disciplinary action.

FAILURE TO COMPLY

Should teams or participants not follow the set procedures or process, the League will conduct a thorough investigation into the situation.

Should the investigation determine that the procedures and process were not followed, the League holds the right to fine the offending team a maximum of \$2500 and suspend the Head Coach for five (5) games. The offending team will be suspended from all game play (League, Exhibition, Tournament and Exhibition) until the fine is paid.



APPENDIX D: APPROVED PLAYOFF FORMATS

The following are approved playoff formats for use by Hockey Alberta Minor Leagues to be chosen at the discretion of each league.

Leagues can submit a new playoff format for use in the current playing season for approval by the Minor Leagues Committee. All submissions must be received by no later than December 1st of the current playing season.

All teams shall participate in playoffs and will not be eliminated after the conclusion of the Regular Season. Leagues are required to schedule all teams to participate in playoffs until the first week of March.

Knockout

- **Double Elimination** – Teams must lose either two games or series (at the discretion of the League) to be eliminated. There is a winner's bracket and a loser's bracket. Each team starts in the winner's bracket. If a team loses, they move to the loser's bracket. If a team loses again in the loser's bracket, they are eliminated. The last remaining team from each bracket will play for the championship. The team from the loser's bracket must beat the team from the winner's bracket twice to be the champion.

Round Robin

- **Traditional Round Robin** – All teams in the Round Robin or specific pool (at the discretion of the League) will play each other an equal number of times in the Round Robin. The League will then determine the number of teams that will move onto a single elimination playoff after the conclusion of the round robin.
- **Semi Round Robin** - When round robin pools have a different number of teams. All pools will play the same number of games as the pool with the least number of teams. Pools with more teams will determine opponents based on the results of each round robin games (ex. Winner's play each other). Tie breaking procedures need to be used in the pools where not all teams play each other.
- **Consolation/ Multi-Level Traditional** - Teams will play in a play-in round to determine a split between which teams will proceed into a winner's round, and which teams will proceed into a consolation round. The number of consolation rounds can vary.

Following the round robin format of a Round Robin Playoff, Leagues are permitted to use a knockout structure (single or double elimination) to determine a champion

Final Series

Leagues may schedule the final two teams of a Knockout or Round Robin to play a series to determine the League Playoff Champion.



APPENDIX E: APPROVED OVERTIME FORMATS

Should a League choose to operate Overtime during the Regular Season, they will be required to follow the below Regular Season Overtime Format.

Regular Season Overtime Format

- a. At the end of Regulation, a five-minute 3-on-3, sudden victory overtime period shall be played.
- b. At no time will a team have less than three (3) players on the ice. This may require a fourth and/or fifth skater to be added in the event penalties are assessed.
- c. Overtime Penalties
 - i) Should regulation time end and a team is on a 5-on-3 man advantage, that team shall start overtime 5-on-3. Once player strength reaches 5-on-4 or 5-on-5, at the next stoppage of play, player strength is adjusted to 4-on-3 or 3-on-3 as appropriate.
 - ii) When regulation ends and teams are 4-on-4, teams will start overtime 3-on-3.
 - iii) If at the end of regulation time, teams are 3-on-3, overtime starts 3-on-3. Once player strength reaches 4-on-4, 5-on-4 or 5-on-5, at the next stoppage player strength is adjusted to 3-on-3 or 4-on-3 as appropriate.
 - iv) If a team is penalized in overtime, teams play 4-on-3. If both teams are penalized with minor penalties at the same stoppage of play (with no other penalties in effect), teams will continue to play 3-on-3.
 - v) In overtime, if a team is penalized such that a two-man advantage is called for, then the offending team will remain at three (3) skaters while the non-offending team will be permitted five (5) skaters. At the first stoppage of play after the two-man advantage is no longer in effect, the numerical strength of the teams will revert to 4-on-3 or 3-on-3, as appropriate.
- d. Should a game remain tied after the five-minute 3-on-3, sudden victory overtime period, the game shall end in a tie.

Playoff Overtime Format

Based on the approved playoff structure utilized, Overtime may be played for any playoff game tied after Regulation. Due to factors around ice availability and time slots, Rural Leagues and Metro Leagues will operate under slightly different Overtime Rules.

Rural Leagues Playoff Overtime Rules

- a. At the end of Regulation, a five-minute 5-on-5, sudden victory overtime period shall be played.
 - i) If at the end of the first overtime period the teams are still tied, a four-minute 4-on-4, sudden victory overtime period shall be played.
 - ii) If at the end of the second overtime period, the teams are still tied, a three-minute 3-on-3, sudden victory period shall be played.
 - iii) If at the end third overtime period, a shoot-out shall commence to determine the winner.
- b. At no time will a team have less than three (3) players on the ice.
- c. Overtime Penalties
 - i) Should regulation time end and a team is on a 5-on-3 advantage, that team shall start overtime 5-on-3. Once player strength reaches 5-on-4 or 5-on-5, at the next stoppage of play, player strength is adjusted to the appropriate overtime period.
 - ii) If at the end of regulation time, teams are 3-on-3, overtime start 3-on-3. Once player strength reached 4-on-4, 5-on-4 or 5-on-5, at the next stoppage player strength is adjusted to the appropriate overtime period.
 - iii) In overtime, if a team is penalized such that a two-man advantage is called for, then the offending team will remain at three (3) skaters while the non-offending team will be permitted five (5) skaters. At the first stoppage of play after the two-man advantage is no



longer in effect, the numerical strength of the teams will revert to 4-on-3 or 3-on-3, as appropriate, depending on the appropriate overtime period.

d. Shootout

- i) Should the game still be tied at the end of the ten-minute sudden victory overtime, the teams will proceed to a three (3) player shootout. Hockey Canada Playing Rule 4.9 – Penalty Shot, shall govern the shootout.
- ii) The home team shall determine which team shoots first. The teams will alternate shots.
- iii) Goalkeepers shall occupy the goal closest to their Team's bench.
- iv) Eligible players from each team shall participate in the shootout and then shall proceed in such order as the Coach selects.
- v) Each team must provide the order of the first three (3) shooters to the Official prior to the start of the shootout.
- vi) All players are eligible to participate in the shootout unless they are serving a ten-minute misconduct or have been assessed a game misconduct/ejection, match or gross misconduct penalty. If a goalkeeper has been assessed a misconduct, the player designated to serve the misconduct penalty becomes ineligible for the shootout. If a misconduct is assessed to the goalkeeper during the shootout, the player designated to serve the misconduct must be a player who has yet to shoot and thus becomes ineligible to shoot.
- vii) Once the shootout begins, the goalkeeper cannot be replaced unless s/he is injured. No warmup shall be permitted for a substitute goalkeeper.
- viii) Each team will be given five (5) shots unless the outcome is determined earlier in the shootout. After each team has taken five (5) shots, if the score remains tied, the shootout will proceed to a sudden victory format.
- ix) No player may shoot twice until everyone who is eligible has shot.
- x) Regardless of the number of goals scored during the shootout portion of overtime, the final score recorded for the game will give the winning team one (1) more goal than the opponent, based on the score at the end of overtime. The losing goalkeeper will not be charged with the extra goal against. The player scoring the game-winning goal in the shootout will not be credited with a goal.

Metro Leagues Playoff Overtime Rules

- a. Metro Leagues, should they choose, may operate under the Rural Leagues Overtime Rules.
- b. At the end of Regulation, a five-minute, 3-on-3, sudden victory overtime period shall be played.
- c. At no time will a team have less than three (3) players on the ice.
- d. Overtime Penalties
 - i) Should regulation time end and a team is on a 5-on-3 advantage, that team shall start overtime 5-on-3. Once player strength reaches 5-on-4 or 5-on-5, at the next stoppage of play, player strength is adjusted to 4-on-3 or 3-on-3 as appropriate.
 - ii) When regulation ends and teams are 4-on-4, teams will start overtime 3-on-3.
 - iii) If at the end of regulation time, teams are 3-on-3, overtime start 3-on-3. Once player strength reached 4-on-4, 5-on-4, or 5-on-5, at the next stoppage player strength is adjusted to 3-on-3 or 4-on-3 as appropriate.
 - iv) If a team is penalized in overtime, teams play 4-on-3. If both teams are penalized with minor penalties at the same stoppage of play (with no other penalties in effect), teams will continue to play 3-on-3.
 - v) In overtime, if a team is penalized such that a two-man advantage is called for, then the offending team will remain at three (3) skaters, while the non-offending team will be permitted five (5) skaters.
 - vi) At the first stoppage of play after the two-man advantage is no longer in effect, the numerical strength of teams will revert to 4-on-3 or 3-on-3, as appropriate.
- e. Shootout



- i) Should the game still be tied at the end of the five-minute sudden victory overtime, the teams will proceed to a three (3) player shootout. Hockey Canada Playing Rule 4.9 – Penalty Shot, shall govern the shootout.
- ii) The home team shall determine which team shoots first. The teams will alternate shots.
- iii) Goalkeepers shall occupy the goal closest to their Team’s bench.
- iv) Eligible players from each team shall participate in the shootout and then shall proceed in such order as the Coach selects.
- v) Each team must provide the order of the first three (3) shooters to the Official prior to the start of the shootout.
- vi) All players are eligible to participate in the shootout unless they are serving a ten-minute misconduct or have been assessed a game misconduct/ejection, match or gross misconduct penalty. If a goalkeeper has been assessed a misconduct, the player designated to serve the misconduct penalty becomes ineligible for the shootout. If a misconduct is assessed to the goalkeepers during the shootout, the player designated to serve the misconduct must be a player who has yet to shoot and thus becomes ineligible to shoot.
- vii) Once the shootout begins, the goalkeepers cannot be replaced unless he is injured. No warmup shall be permitted for a substitute goalkeeper.
- viii) Each team will be given five (5) shots unless the outcome is determined earlier in the shootout. After each team has taken five (5) shots, if the score remains tied, the shootout will proceed to a sudden victory format.
- ix) No player may shoot twice until everyone who is eligible has shot.
- x) Regardless of the number of goals scored during the shootout portion of overtime, the final score recorded for the game will give the winning team one (1) more goal than the opponent, based on the score at the end of overtime. The losing goalkeeper will not be charged with the extra goal against. The player scoring the game-winning goal in the shootout will not be credited with a goal.